

Table of Contents

Event analysis III.....	2
History	5

Event analysis III

Behavioral events

Open or create a project and click the **Create Event Graph** button



The following window appears:

Figure 1 Create event chart

1. Select series for event chart
2. Select type of event, in this case **Behavioral**.
3. Set event conditions
 - Define minimum event duration and amplitude
4. Insert a name and description
5. Define the amplitude levels

Define the number of levels you want to include in the chart. You can either insert the levels manually or check the **Automatic definition** box and let **PatternFinder** define the levels automatically.

The level definition can be saved as a template. If it has already been saved the user can select the template from the drop-down list.

Once you have defined the levels click **OK** and the following chart appears:

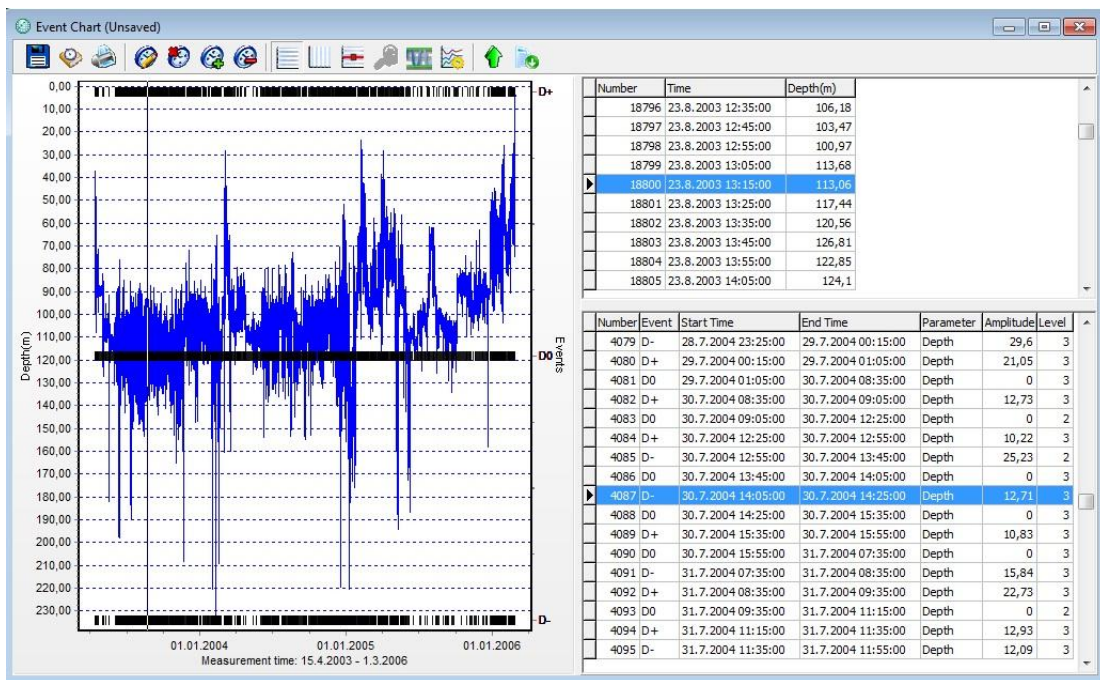


Figure 2 Event chart

To perform a statistical analysis, click the **Event period statistics** button



on the main toolbar and the following window appears:

Create Event Statistics

Pick an event:

Data
 Amplitude
 Duration
 Events overlap periods

Define the time-averaging period:
 Minutes
 Hours
 Days
 Week
 Month

OK Cancel

Figure 3 Create event statistics

Select the event and the time-averaging period you want to analyze.

The user can choose to perform a statistical analysis either by **Amplitude** or **Duration**.

By checking **Events overlap periods** events that extend over two or more periods are split between periods.

Click **OK** and a statistics chart appears:

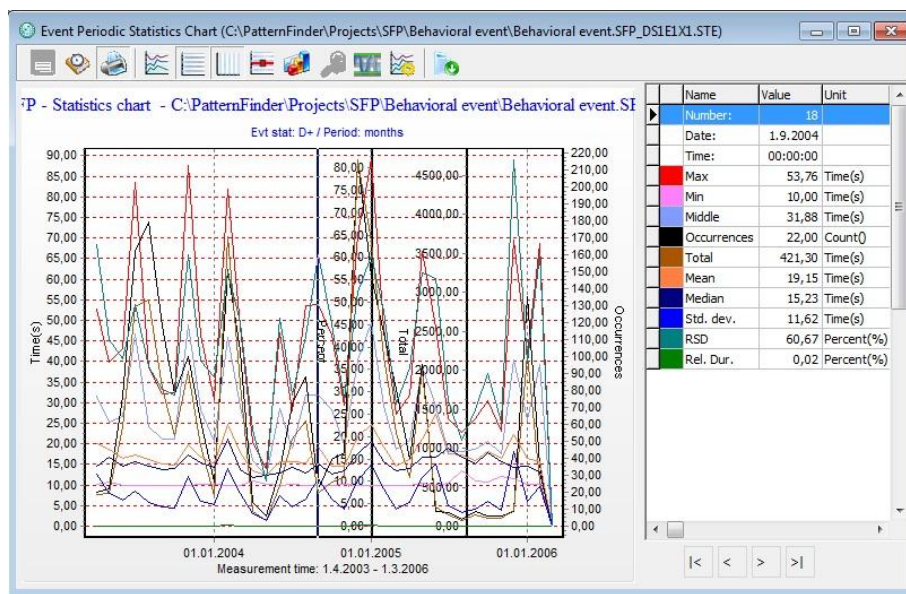



Figure 4 Event periodic statistics chart

History

Click the **History** button  on the chart bar to add comments and view information on the origin of the signal and the progress of the project (see figure 5). Click **Print** to print out the information (see figure 6).

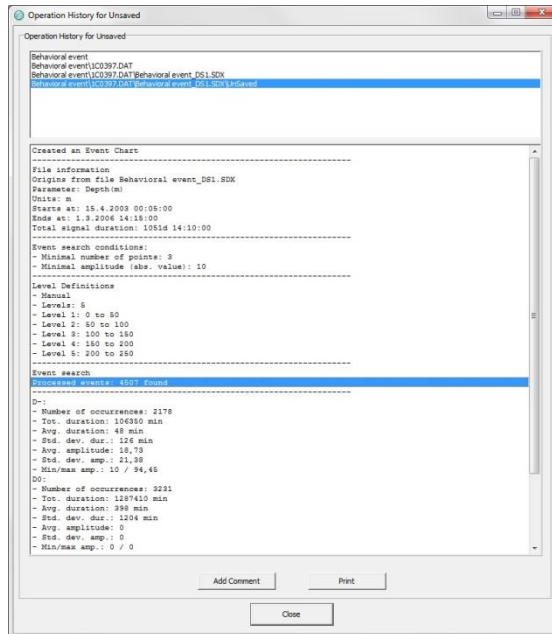


Figure 5 History

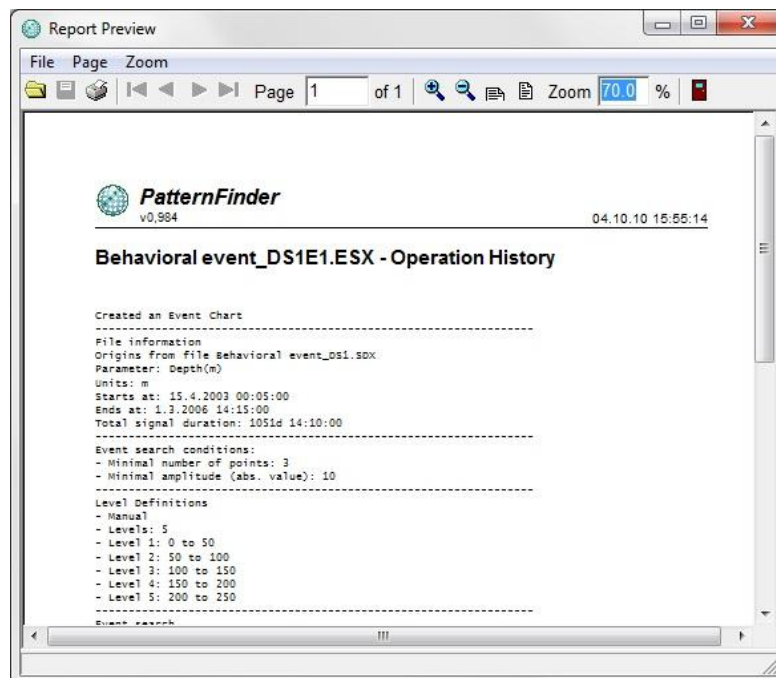


Figure 6 Print preview